

# INTERLACE

---

PHOTOGRAPHED BY MADELEINE KIMBALL | 2025

---

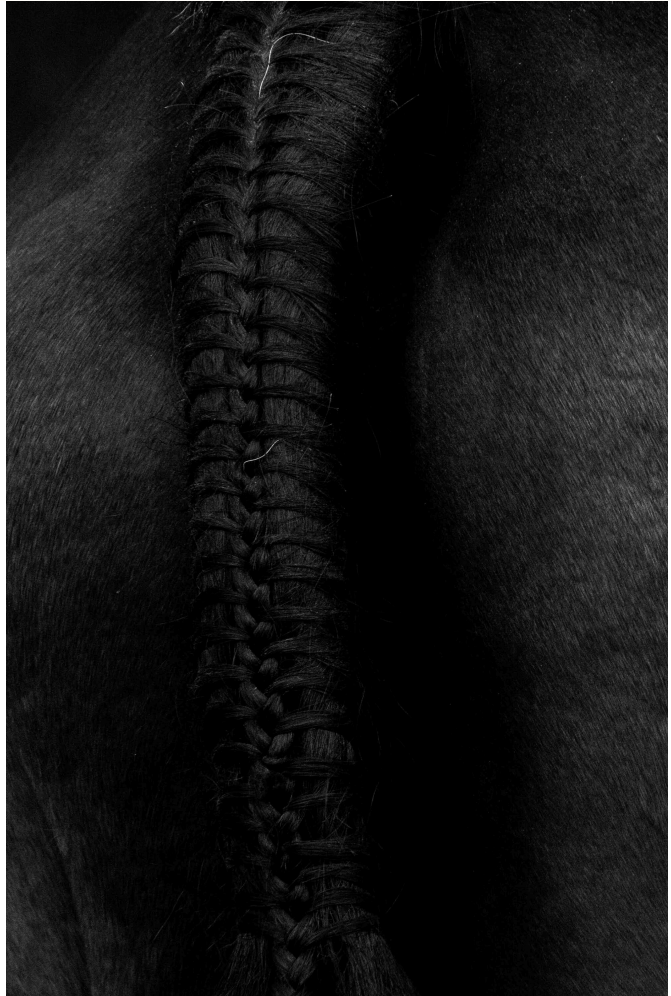
Focused on a braided tail, the photograph distills an equestrian detail into a study of connection and refinement, revealing how separate strands are drawn together into a singular expression of purpose and grace. Printed in Brooklyn on museum-grade archival matte paper — acid-free and lignin-free for preservation and tonal clarity.

## ARTIST BIO

---

Madeleine Kimball is a designer and photographer whose work explores form through nature, landscape, and structure.

Presented through Samuel Madeleine, her collectible furniture and fine art prints share a language of proportion, materiality, and modern elegance. Drawing from Equine, Tropics, Arbor, and Yacht & Sailing, her photographic works explore structure, light, and form through a contemporary lens.



---

## LEAD TIME

---

Upon request

---

## AVAILABILITY

---

Made to order

---

## DELIVERY

---

White-glove delivery available upon request.

---

Product and Material Representation: Product imagery and visualizations are illustrative. Each Samuel Madeleine piece is made to order in France by our master ateliers; natural variations in wood grain, stone veining, color, texture, craftsmanship, and finishing are expected and contribute to the individuality of every piece.